

0CNP2-M54400EN

Directions for the Parts Catalog.

1. This Parts Catalog shows both standard and optional parts.
2. Parts may change without prior notice.
3. The following is an example of the Parts Catalog format.

REF.	LEV.	PARTS NO.	DESCRIPTION	Q'TY						I	R
				(A)	(B)	(C)	(D)	(E)	(F)		
1	1	729595-51390	FUEL INJECTION PUMP	1	1	1	1	1			1
1-1	1	729595-51391	FUEL INJECTION PUMP	1	1	1	1	1		N	1
		(A=E00185) (B=E00200)									
3	2	26022-060162	SCREW M 6X 16	9	9	9	9	9			
3-1	2	26022-060162	SCREW M 6X 16	4	4	4	4	4		K	
		(A=E00156) (B=E00156) (C=E00156) (D=E00156) (E=E00156)									
4	2	129470-51040	CAMSHAFT	1	1	1	1	1			
5	2	122710-51050	BEARING, ROLLER	2	2	2	2	2			
6	2	129470-51060	RETAINER	1	1	1	1	1			

Remarks
(1) BOOST COMPEMSATOR TYPE. OPTIONAL PART, TO E00155,(4JH-DT, 4JH-DTZ

① Ref. No.

The Ref. No. listed may not be in accordance with the illustration Ref. No.

(Ex.) Illustration No.

List Ref No.

1

1

(Before change)

1-1

(After change)

For interchangeable symbols N, R and K, illustrations for new parts may be abbreviated.

② Lev. (Level)

Level indication

The numbers below indicate the level of relativity towards the main part.

1 ----- Main parts (Assembly parts)

2 ----- Sub component included in " 1 ".

3 ----- Sub component included in " 2 ".

Note) Parts that are not for sale are partially illustrated but not listed.

③ Interchangeability Symbol

When a part change takes place, one of the following interchangeability symbols is indicated beside the part.

Symbol	Interchangeability	Contents note
N	Old $\begin{matrix} \leftarrow \text{Yes} \\ \text{No} \rightarrow \end{matrix}$ New	New Part is interchangeable for Old Part but Old Part is not interchangeable for New Part.
Q	Old $\begin{matrix} \leftarrow \text{No} \\ \text{Yes} \rightarrow \end{matrix}$ New	New Part is not interchangeable for Old Part but Old Part is interchangeable for New Part.
R	Old $\begin{matrix} \leftarrow \text{Yes} \\ \text{Yes} \rightarrow \end{matrix}$ New	New/ Old Parts are both interchangeable.
S	Old $\begin{matrix} \leftarrow \text{No} \\ \text{No} \rightarrow \end{matrix}$ New	New/ Old Parts are both not interchangeable.
W		Part newly added.
Z		Part discontinued.
F		Not interchangeable by a single part but interchangeable together with related parts.
K		Changes only for used parts quantities.

④ Effective Machine No.

When a part changes, the effective Machine No. will be indicated in the (A)-(F) column.

Product Symbol	Product No.	Product Symbol	Product No.
C	Clutch No. Compressor No.	F	Machine No. (Agricultural Equip.)
D	Drive No.	M	Machine No.
E	Engine No.		

Note 1) A date may follow the symbol. (Ex.) 1996.01

Note 2) "XXXXX" and "ZZZZZ" are for parts that could not be predicted or for engine models that could not be identified.

Note 3) (A=E00185) is the E (Engine Serial Number) for the column (A) model (in this case 4JH-DT) after the parts design change.

⑤ Remarks

Figures or alphabets (symbols) are entered in the remarks column.

The comments (remarks) on parts that are indicated at the bottom of the illustration are the same symbols as those stated above.

PAINTING COLOR

SECTION	PAINTING COLOR	COLOR SPRAY	MAIN PARTS	COLOR CODE (FIGURE)
Main body	YANMAR Red 1	TOR-90400003	Handle frame CMP	50
Main body	YANMAR White	TOR-90250002	Fender Handle CMP	14
Main body	YANMAR Plain silver M2	TOR-90310003	Cover, in side CMP Engine frame CMP	19

Please surely use **YANMAR** Genuine color spray any **YANMAR** agricultural machines.

Given painting color may be altered for improvement, etc. without prior notice.

Contents

Fig. No. Fig. Name

PULLEY & TENSION SECTION

1. ENGINE MOUNTING & PULLEY
2. MAIN PULLEY & TENSION

TRANSMISSION UNIT

3. TRANSMISSION CASE
4. MAIN & COUNTER SHAFTS
5. FINAL SHAFT & AXLE
6. MAIN CHANGE
7. SIDE CLUTCH

WHEEL SECTION

8. FENDER

HANDLE SECTION

9. HANDLE COLUMN(MOVE-ROUND)
10. HANDLE
11. CONTROL LEVER 1
12. CONTROL LEVER 2

ENGINE FRAME SECTION

13. ENGINE FRAME & HITCH
14. BELT COVER
15. BONNET

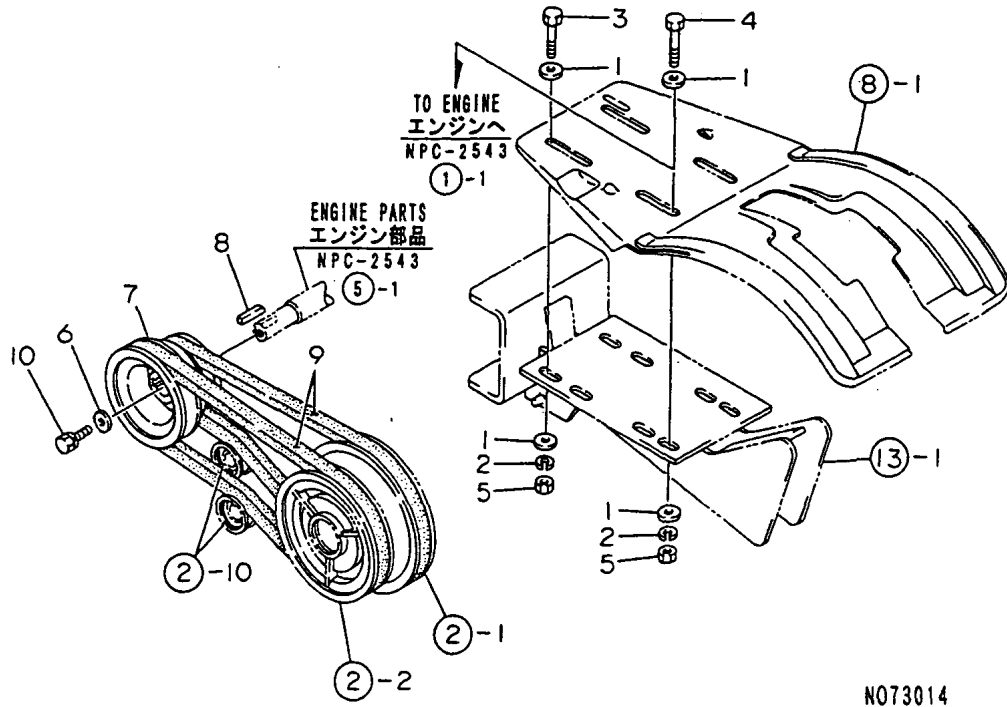
Fig. No. Fig. Name

LABELS & ACCESSORIES SECTION

16. ELECTRICAL PARTS
17. LABELS
18. TOOLS & ACCESSORIES

Fig.1. ENGINE MOUNTING & PULLEY

1. ENGINE MOUNTING & PULLEY



(A)=YK462

(B)=

(C)=

(D)=

(E)=

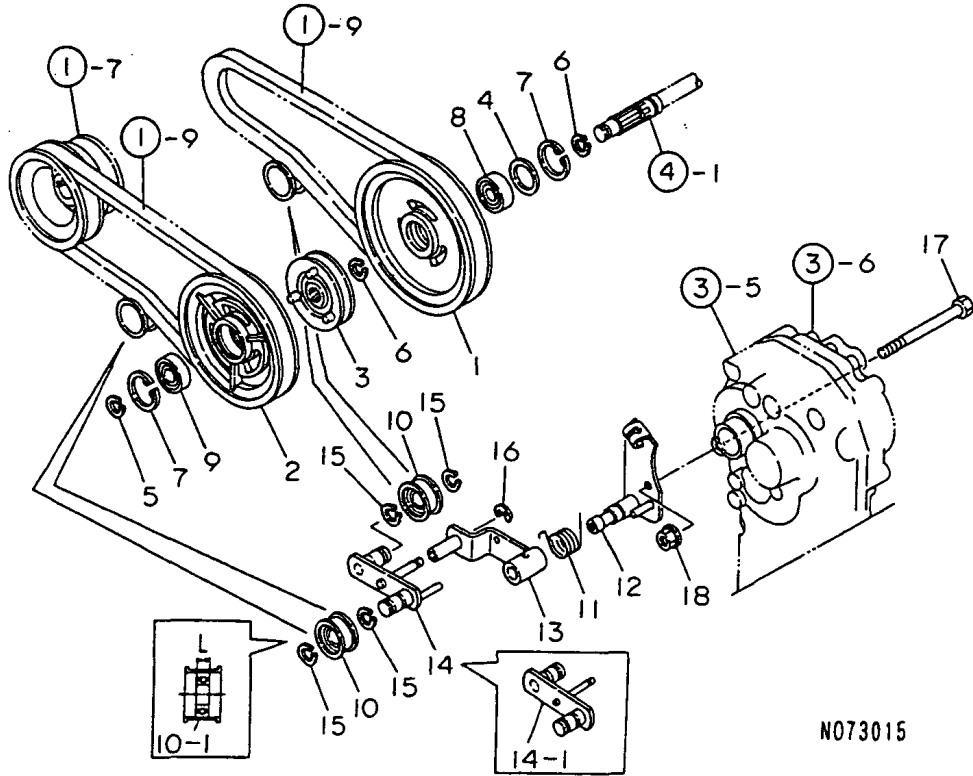
(F)=

No.	Lev.	Parts No.	Description	Qty						I	R
				(A)	(B)	(C)	(D)	(E)	(F)		
1	1	22137-080000	WASHER, 8	8							
2	1	22217-080000	WASHER, SPRING 8	4							
3	1	26117-080402	BOLT M 8X 40	2							
4	1	26117-080452	BOLT M 8X 45	2							
5	1	26717-080002	NUT, M8	4							
6	1	1D1140-11420	WASHER, PULLEY	1							
7	1	1A2139-12000	PULLEY 422, ENGINE	1							
8	1	22512-050300	KEY, 5X 30	1							
9	1	25123-003501	V-BELT, B35H	2							
10	1	26013-080164	BOLT M 8X 16	1							
10-1	1	26013-080162	BOLT, M8X 16	1							R

(A=FZZZZZ)

Fig.2. MAIN PULLEY & TENSION

2. MAIN PULLEY & TENSION



(A)=YK462

(B)=

(C)=

(D)=

(E)=

(F)=

No.	Lev.	Parts No.	Description	Qty						I	R
				(A)	(B)	(C)	(D)	(E)	(F)		
1	1	1A2009-13300	PULLEY 154,MN.SHAFT	1							
1-1	1	1A2009-13301	PULLEY 154,MN.SHAFT	1							N
(A=F000441)											
2	1	1A2139-13310	PULLEY 134,MN.SHAFT	1							
2-1	1	1A2139-13311	PULLEY 134,MN.SHAFT	1							N
(A=F000441)											
3	1	1A2009-13341	SHIFTER	1							
3-1	1	1A2009-13342	SHIFTER	1							R
(A=F000201)											
4	1	1A1105-23210	LINER, 34X24.2X1.0	1							
5	1	22242-000150	RING, 15	1							
6	1	22242-000170	RING, 17	2							
7	1	22252-000350	RING, 35	2							
8	1	24104-060034	BEARING, BALL 6003UU	1							
9	1	24104-062024	BEARING, BALL 6202UU	1							
10	1	1E4060-10040	ROLLER,TENSION	2							
10-1	1	1A2001-13050	ROLLER CMP,TENSION	2							S 1
(A=F000305)											
10-2	1	1A2001-13051	ROLLER CMP,TENSION	2							N
(A=F000591)											
11	1	1A2000-13190	SPRING,TENSION RETRN	1							
12	1	1A2130-13200	FULCRUM COMP,TENSION	1							
13	1	1A2139-13510	ARM COMP.,TENSION	1							
14	1	1A2009-13540	ARM CMP,TENSION AUX.	1							
14-1	1	1A2001-13100	ARM CMP,TENSION AUX.	1							S
(A=F000305)											
15	1	22242-000150	RING, 15	4							
16	1	22272-000060	RING, E- 6	1							
17	1	26157-101002	BOLT, M10X100 PLATED	1							
18	1	26377-100002	NUT, M10	1							

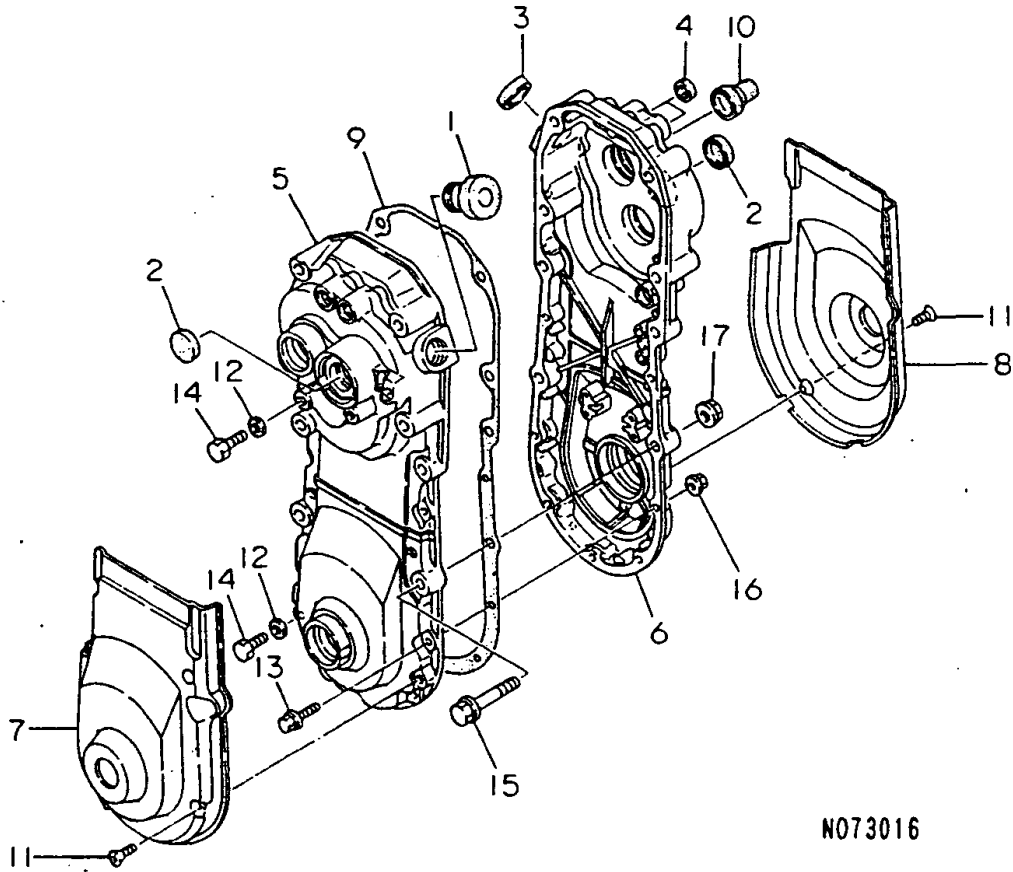
Remarks

(1)L= REFER.NO.10 11M/M,10-1 9M/M.

N:Old $\xrightarrow{\text{Yes}}$ New, Q:Old $\xrightarrow{\text{No}}$ New, R:Old $\xrightarrow{\text{Yes}}$ New, S:Old $\xrightarrow{\text{No}}$ New, W:Add, Z:Discontinued, F:Interchangeable by set, K:Qty Change

Fig.3. TRANSMISSION CASE

3. TRANSMISSION CASE



N073016

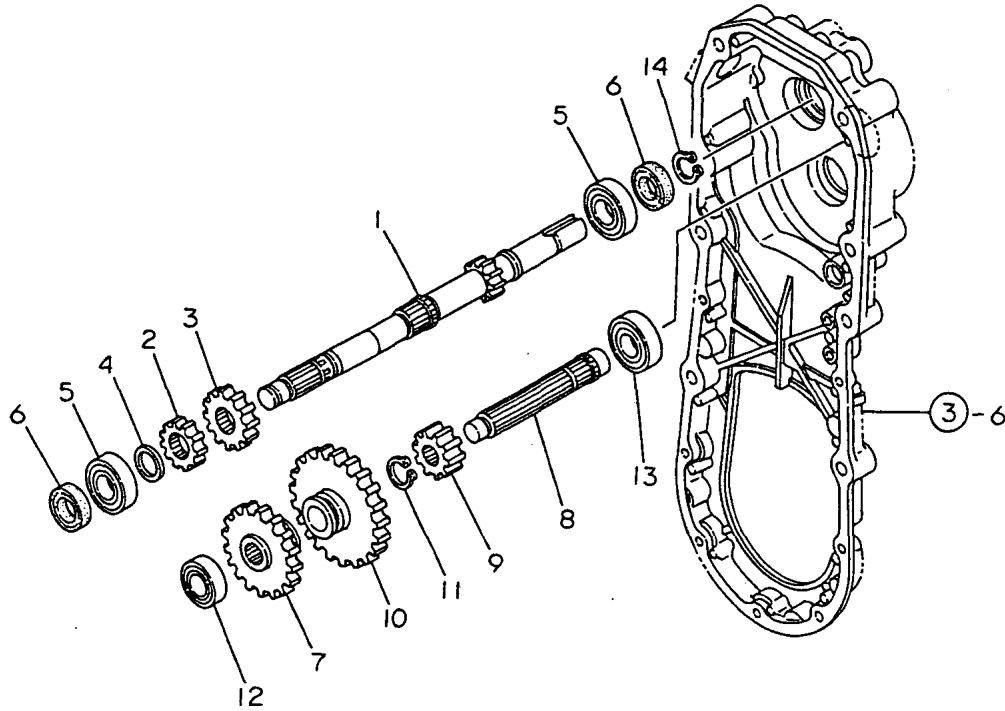
(A)=YK462
(B)=
(C)=

(D)=
(E)=
(F)=

No.	Lev.	Parts No.	Description	Q'ty						I	R
				(A)	(B)	(C)	(D)	(E)	(F)		
1	1	1A1470-20090	CAP 35,OIL FILLER	1							
2	1	1A1750-20410	CAP 30X5,SEAL	2							
3	1	1A1750-20421	CAP 26X6,SEAL	1							
4	1	1A1750-20431	CAP 18X7,SEAL	2							
5	1	1A1950-21100	CASE L,TRANSM.	1							
6	1	1A2130-21110	CASE R,TRANSMISSION	1							
7	1	1A2130-21150	COVER L,PROTECTIVE	1							
8	1	1A2130-21160	COVER R,PROTECTIVE	1							
9	1	1A1950-21200	GASKET, MISSION CASE	1							
10	1	1A1220-28290	CAP, PTO	1							
11	1	22867-600160	SCREW, 6X16	6							
12	1	23414-080000	GASKET, 8X1.0	2							
13	1	26106-060252	BOLT, M6X 25 PLATED	7							
14	1	26117-080122	BOLT M 8X 12 PLATED	2							
14-1	1	1A2001-21250	BOLT M8X12,COLLAR HD	2							S
(A=F000591)											
15	1	26137-100502	BOLT, M10X 50 PLATED	1							
16	1	26367-060002	NUT, M6	7							
17	1	26377-100002	NUT, M10	1							

Fig.4. MAIN & COUNTER SHAFTS

4. MAIN & COUNTER SHAFTS



N073017

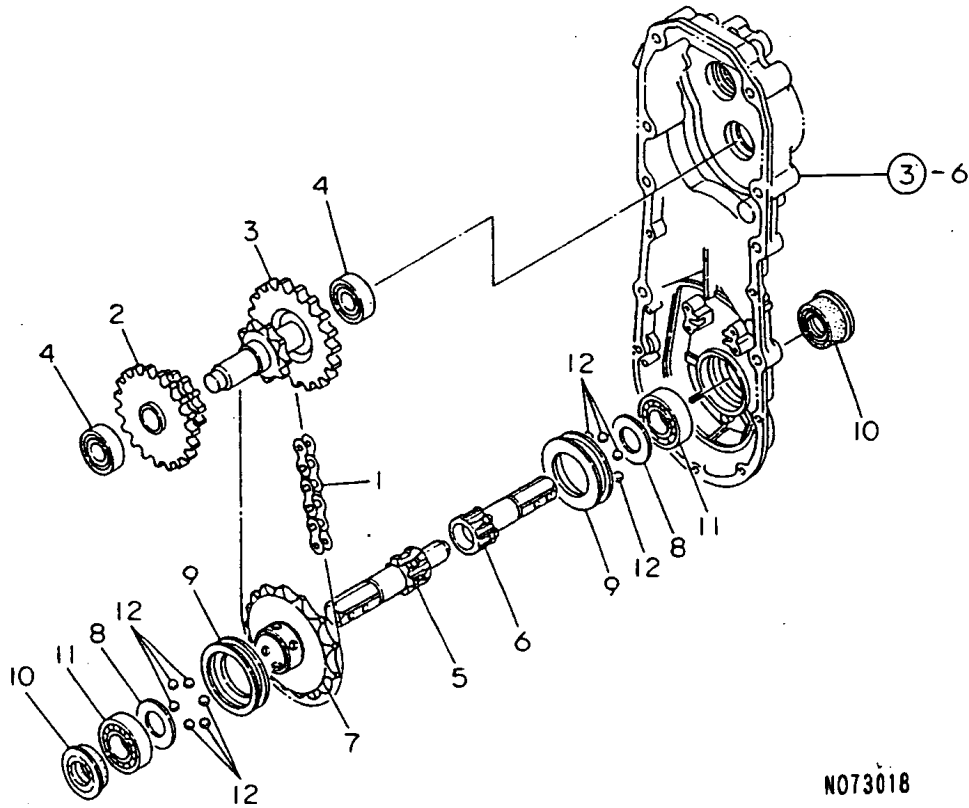
(A)=YK462
(B)=
(C)=

(D)=
(E)=
(F)=

No.	Lev.	Parts No.	Description	Q'ty						I	R
				(A)	(B)	(C)	(D)	(E)	(F)		
1	1	1A2139-23010	SHAFT 422,MAIN	1							
2	1	1A2130-23020	GEAR 14	1							
3	1	1A2130-23030	GEAR 19	1							
4	1	1E4060-74090	LINER 17X24X1	1							
5	1	24101-062034	BEARING, BALL 6203	2							
6	1	24421-173007	SEAL, OIL TC173007	2							
7	1	1A2130-23110	GEAR 31,SLIDE	1							
8	1	1A2130-23200	SHAFT,H SUB-	1							
9	1	1A2130-23210	GEAR 13	1							
10	1	1A2130-23220	GEAR 40,SLIDE	1							
11	1	22242-000170	RING, 17	1							
12	1	24101-062024	BEARING, BALL 6202	1							
13	1	24101-062034	BEARING, BALL 6203	1							
14	1	22242-000170	RING, 17	1							

Fig.5. FINAL SHAFT & AXLE

5. FINAL SHAFT & AXLE



N073018

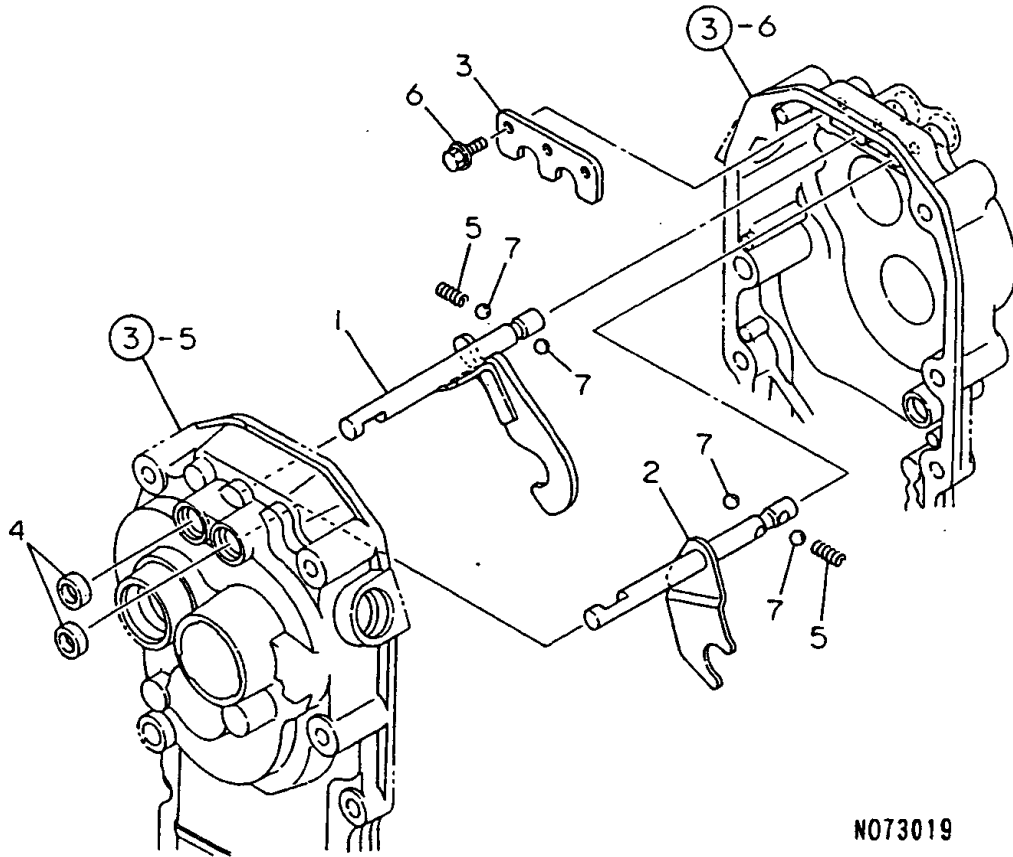
(A)=YK462
(B)=
(C)=

(D)=
(E)=
(F)=

No.	Lev.	Parts No.	Description	Qty						I	R
				(A)	(B)	(C)	(D)	(E)	(F)		
1	1	1A2138-23500	CHAIN EK50X46,ROLLER	1							
2	1	1A2130-23830	GEAR 40X20	1							
3	1	1A2130-23900	SHAFT CMP.,H FINAL	1							
4	1	24101-062024	BEARING, BALL 6202	2							
5	1	1A2009-24501	AXLE A	1							
6	1	1A2009-24511	AXLE B	1							
7	1	1A2000-24520	SPROCKET,AXLE	1							
8	1	1A2000-24530	LINER 27X45X2	2							
9	1	1A2000-24550	SHIFTER	2							
10	1	1A2000-24600	SEAL 254411,OIL	2							
11	1	24101-062054	BEARING, BALL 6205	2							
12	1	24190-120001	BALL, STEEL 3/8	12							

Fig.6. MAIN CHANGE

6. MAIN CHANGE



N073019

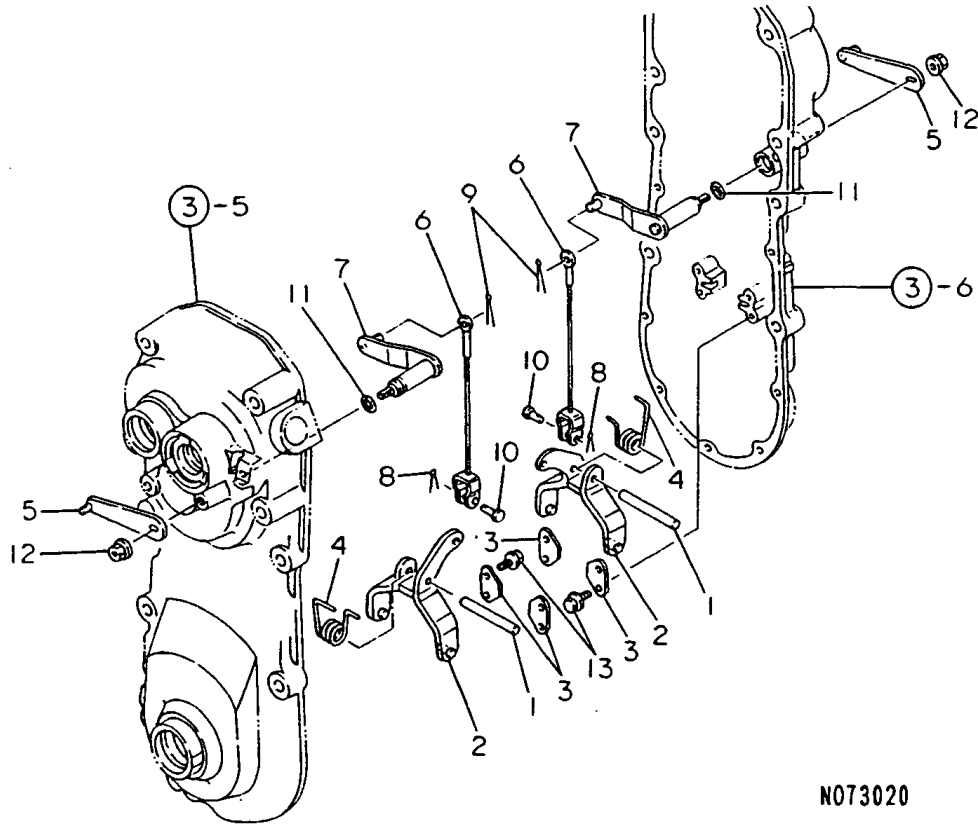
(A)=YK462
(B)=
(C)=

(D)=
(E)=
(F)=

No.	Lev.	Parts No.	Description	Q'ty						I	R
				(A)	(B)	(C)	(D)	(E)	(F)		
1	1	1A2130-27000	SHAFT A COMPL.,FORK	1							
2	1	1A2130-27050	SHAFT B COMPL.,FORK	1							
3	1	1A1950-27100	PLATE,BALL KEEP	1							
3-1	1	1A1950-27101 (A=F000305)	PLATE,BALL KEEP	1							N
3-2	1	1A2130-27100 (A=F000305)	PLATE,BALL KEEP	1							N
4	1	1A1104-28230	OIL SEAL 12184	2							
5	1	1E6150-56040	SPRING, FORK	2							
6	1	1A1750-90200	SCREW 6X12,COLLAR HD	3							
7	1	24190-100001	BALL, STEEL 5/16	4							

Fig.7. SIDE CLUTCH

7. SIDE CLUTCH



N073020

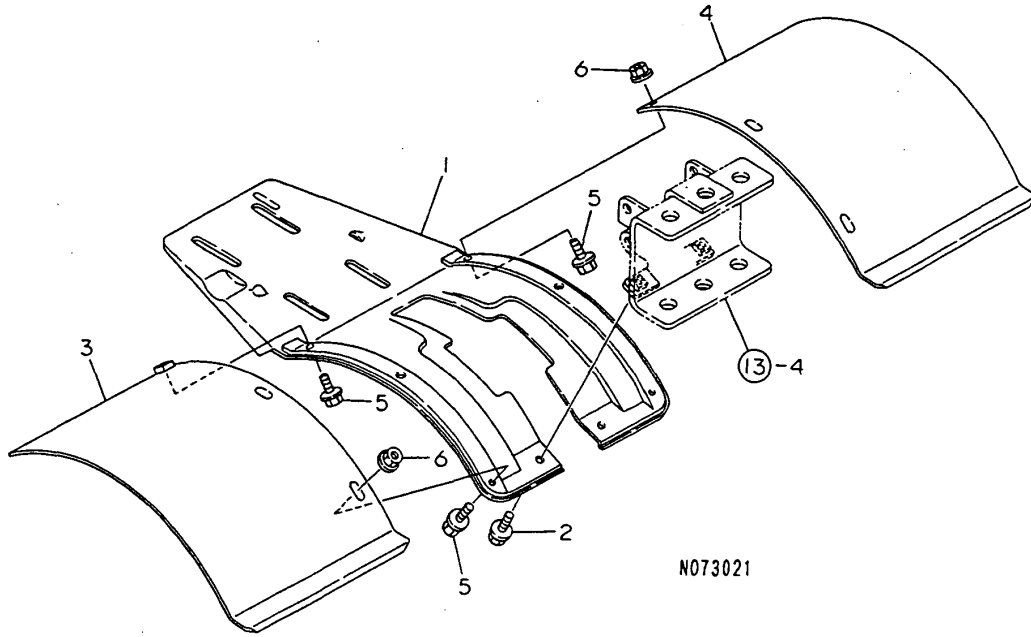
(A)=YK462
(B)=
(C)=

(D)=
(E)=
(F)=

No.	Lev.	Parts No.	Description	Qty						I	R
				(A)	(B)	(C)	(D)	(E)	(F)		
1	1	1A1470-20700	PIN 8X55	2							
2	1	1A2000-27530	FORK COMP.,SD.CLUTCH	2							
3	1	1A2000-27600	PLATE,SD.CLUTCH KEEP	4							
4	1	1A2000-27650	SPRING,SD.CLTCH TORS	2							
5	1	1A2130-27700	ARM COMP,SIDE CLUTCH	2							
6	1	1A1950-27750	CLUTCH,CABLE SIDE	2							
7	1	1A1950-27800	SHAFT COMP,SD.CLUTCH	2							
8	1	22417-160120	PIN, COTTER 1.6X12	2							
9	1	22417-200120	COTTER PIN 2.0X12	2							
10	1	22487-060120	PIN, H 6X 12	2							
11	1	24311-000100	O-RING, 1AP10.0	2							
12	1	26367-080002	NUT, M8	2							
13	1	26476-060142	SCREW, TAPPING M6X14	8							

Fig.8. FENDER

8. FENDER



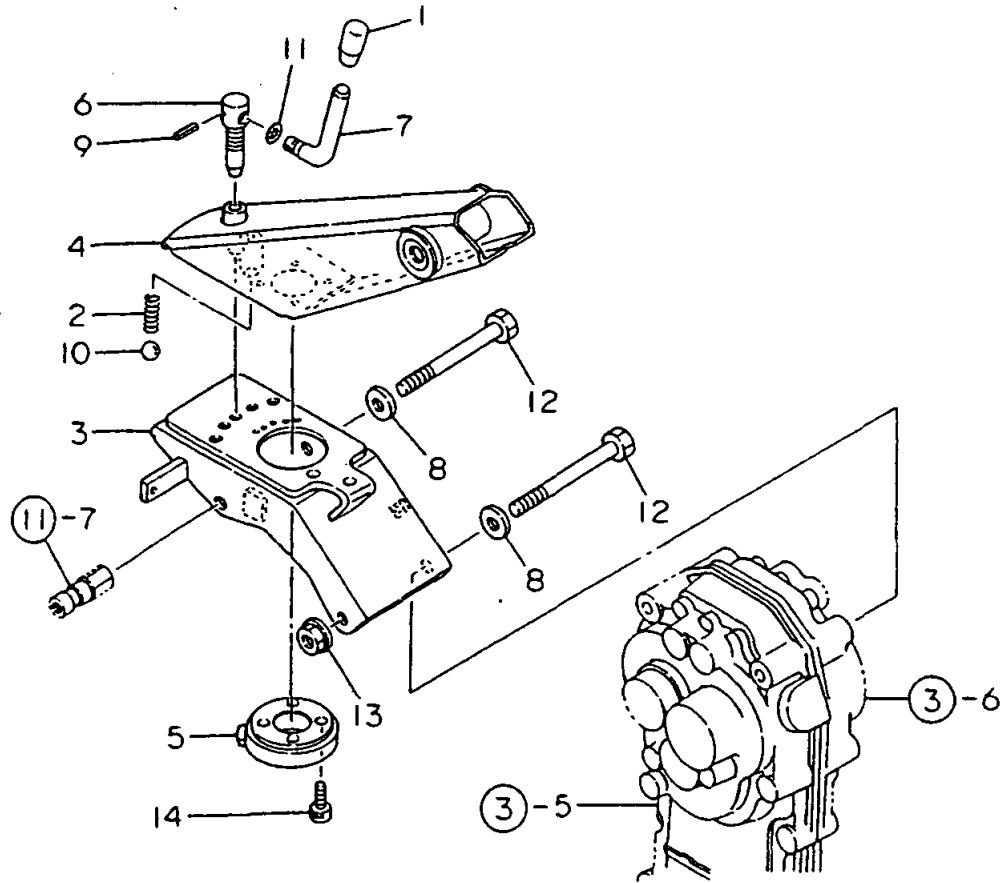
(A)=YK462
(B)=
(C)=

(D)=
(E)=
(F)=

No.	Lev.	Parts No.	Description	Q'ty						I	R
				(A)	(B)	(C)	(D)	(E)	(F)		
1	1	1A2130-32000	FENDER	1							
2	1	26107-080122	BOLT M 8X 12 PLATED	2							
3	1	1A2138-32090	FENDER,EXTENSION	1							W
4	1	1A2138-32150	FENDER,EXTENSION	1							W
5	1	26106-080122	BOLT, M8X 12 PLATED	6							W
6	1	26367-080002	NUT, M8	5							W

Fig.9. HANDLE COLUMN(MOVE-ROUND)

9. HANDLE COLUMN(MOVE-ROUND)



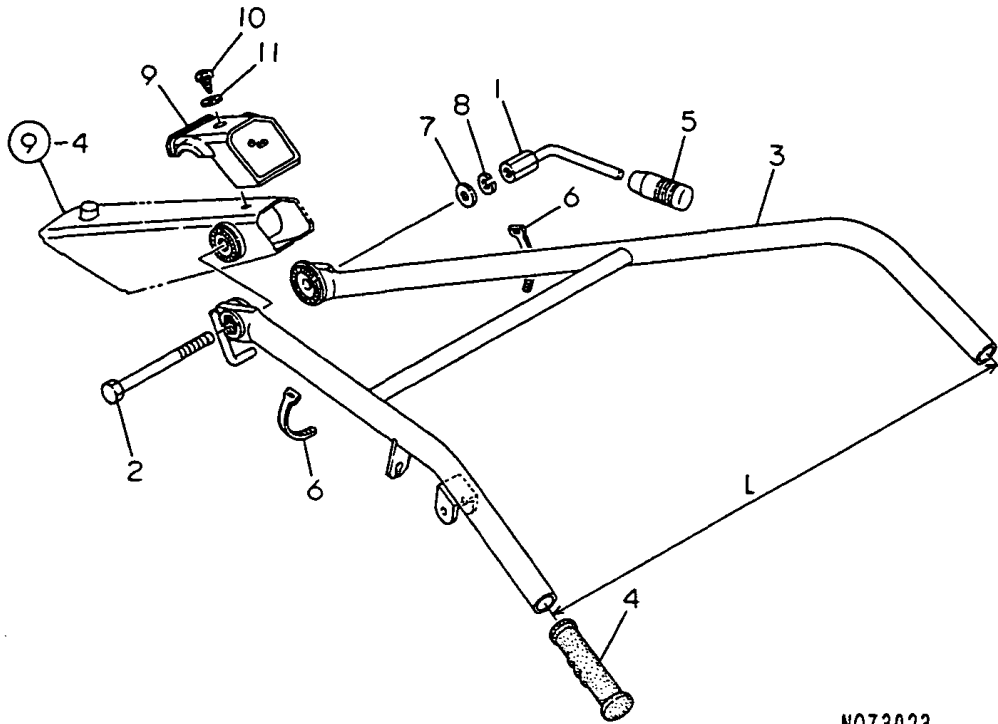
(A)=YK462
(B)=
(C)=

(D)=
(E)=
(F)=

No.	Lev.	Parts No.	Description	Q'ty						I	R
				(A)	(B)	(C)	(D)	(E)	(F)		
1	1	1D2040-15480	KNOB,LEVER	1							
2	1	1A1470-40350	SPRING 9X26	1							
3	1	1A2130-51050	BRACKET ASSY,REGULAT	1							
4	1	1A2130-51100	FRAME COMPL.,HANDLE	1							
5	1	1A2130-51200	METAL,MOVE-RD.CORE	1							
6	1	1A2130-51210	PIN, LOCK	1							
7	1	1A2130-51220	LEVER,WHT.MOVE-ROUND	1							
8	1	22137-100000	WASHER, 10	2							
9	1	22351-040016	PIN, SPRING 4.0X16	1							
10	1	24190-120001	BALL, STEEL 3/8	1							
11	1	24311-000050	O-RING, 1AP5.0	1							
12	1	26157-101002	BOLT, M10X100 PLATED	2							
13	1	26377-100002	NUT, M10	1							
14	1	26450-080202	BOLT, M8X 20	4							

Fig.10. HANDLE

10. HANDLE



N073023

(A)=YK462

(B)=

(C)=

(D)=

(E)=

(F)=

No.	Lev.	Parts No.	Description	Q'ty						I	R
				(A)	(B)	(C)	(D)	(E)	(F)		
1	1	1A2000-51400	LEVER CMP.,HANDLE LC	1							
2	1	1A2000-51430	BOLT 12X125	1							
3	1	1A2139-51500	HANDLE COMPL.	1							
3-1	1	1A2139-51550	HANDLE CMP	1						S	1
		(A=F000541)									
4	1	192040-56220	GRIP,HANDLE	2							
5	1	1E6570-65750	GRIP,CONT.LEVER BLK.	1							
6	1	1E6102-84970	BAND 140,WIRE LOCK	2							
7	1	22137-120000	WASHER, 12	1							
8	1	22217-120000	WASHER, SPRING 12	1							
9	1	1A2130-51400	COVER,HANDLE FRAME	1							
10	1	1A1750-90050	SCREW 5X10,TAPPING	1							
10-1	1	1A1750-90060	SCREW 5X16,TAPPING	1							R
		(A=F000591)									
11	1	1A1750-90150	WASHER 5,PLAIN	1							

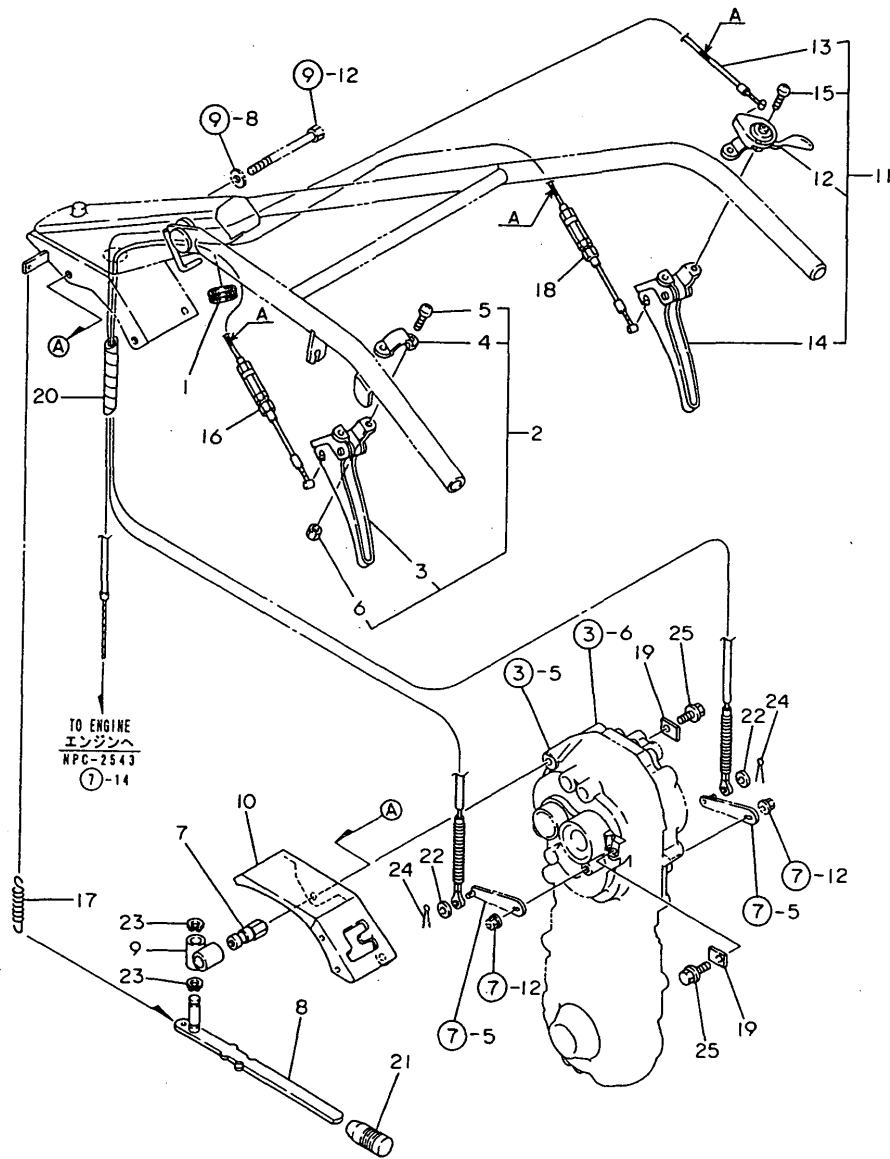
Remarks

(1)L= REFER.NO.3 579M/M,3-1 599M/M.

N:Old $\xrightarrow{\text{Yes}}$ New, Q:Old $\xrightarrow{\text{No}}$ New, R:Old $\xrightarrow{\text{Yes}}$ New, S:Old $\xrightarrow{\text{No}}$ New, W:Add, Z:Discontinued, F:Interchangeable by set, K:Q'ty Change

Fig.11. CONTROL LEVER 1

11. CONTROL LEVER 1



Remarks
 (1)PART NUMBER IS INDICATED IN THE
 "A" AREA.

(A)=YK462

(B)=

(C)=

(D)=

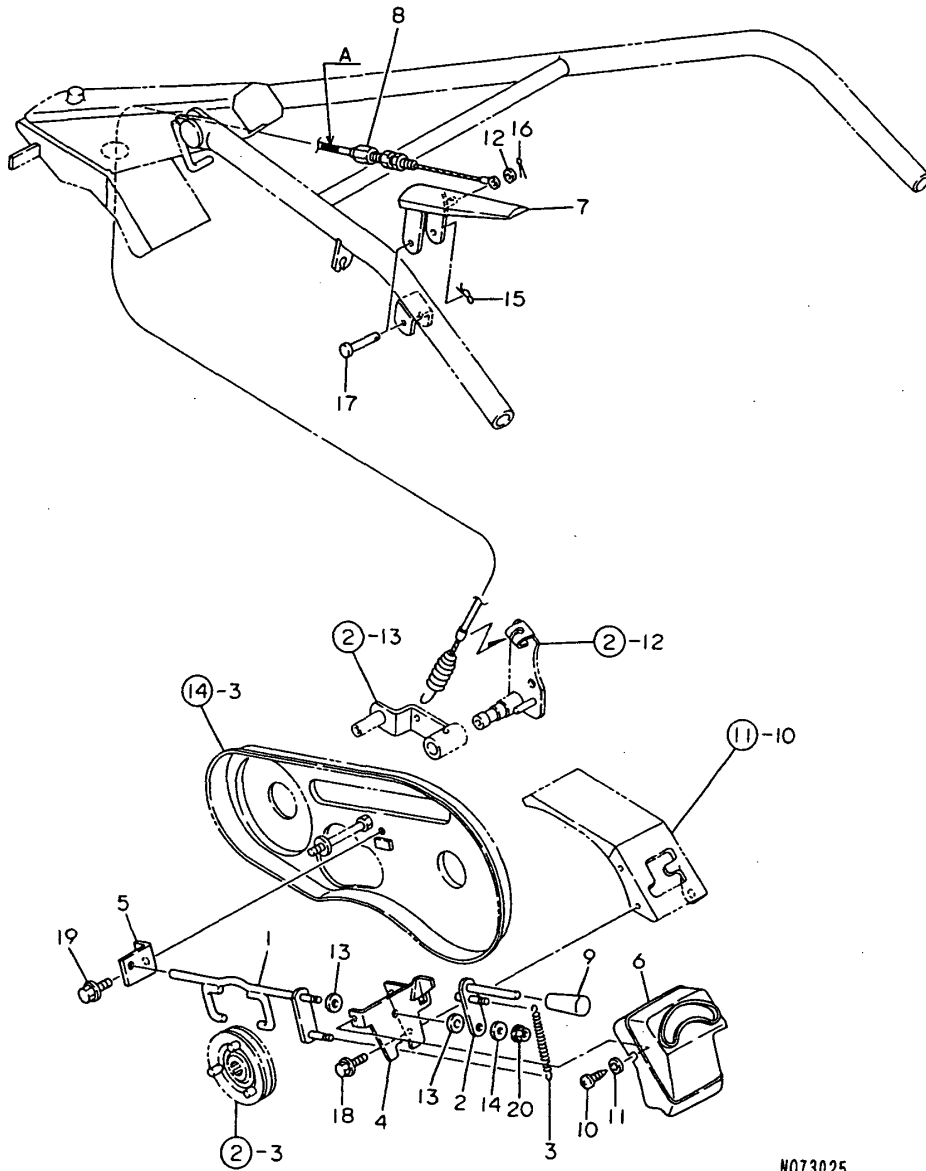
(E)=

(F)=

No.	Lev.	Parts No.	Description	Q'ty						I	R
				(A)	(B)	(C)	(D)	(E)	(F)		
1	1	1A1470-40301	BAND,WIRE PROTECTIVE	1							
2	1	7A1102-50720	LEVER ASSY,LEFT	1							
3	2	1A1102-57350	BODY,LEVER,LEFT	1							
4	2	1A1102-57390	CLIP BAND	1							
5	2	26557-060222	SCREW M 6X 22	2							
6	2	26717-060002	NUT, M6	2							
7	1	1A2130-55050	PIN,CHG.LVR.FULCRUM	1							
8	1	1A2139-55100	LEVER COMP.,CHANGE	1							
9	1	1A2130-55150	FULCRUM COMP.,CHANGE	1							
10	1	1A2139-55200	COVER 422 CMP,CHANGE	1							
11	1	1A2139-55500	LEVER R SET,SD.CLTCH	1							
11-1	1	1A2139-55520	LEVER R SET,SD.CLTCH	1							S
(A=F000541)											
12	2	1A2139-55510	LEVER RE,ACCELERATOR	1							
13	2	1A2130-55520	WIRE, ACCEL	1							
13-1	2	1A2139-55530	WIRE, THROTTLE	1							S 1
(A=F000541)											
14	2	1A1102-57360	BODY,LEVER,RIGHT	1							
15	2	26557-060222	SCREW M 6X 22	2							
16	1	1A2130-55800	WIRE L CMP,SD.CLUTCH	1							
16-1	1	1A2139-55800	WIRE L CMP,SD.CLUTCH	1							S 1
(A=F000541)											
17	1	1A2000-55830	SPRING,CHANGE LEVER	1							
18	1	1A2130-55850	WIRE R CMP,SD.CLUTCH	1							
18-1	1	1A2139-55850	WIRE R CMP,SD.CLUTCH	1							S 1
(A=F000541)											
19	1	1A2130-55900	CLAMP,SD.CLUTCH WIRE	2							
20	1	1A2130-55950	TUBE 15X180,COILED	1							
21	1	1E6570-65750	GRIP,CONT.LEVER BLK.	1							
22	1	22137-060000	WASHER, 6	2							
23	1	22242-000120	RING, 12	2							
24	1	22417-200100	COTTER PIN 2.0X10	2							
25	1	26476-060142	SCREW, TAPPING M6X14	2							

Fig.12. CONTROL LEVER 2

12. CONTROL LEVER 2

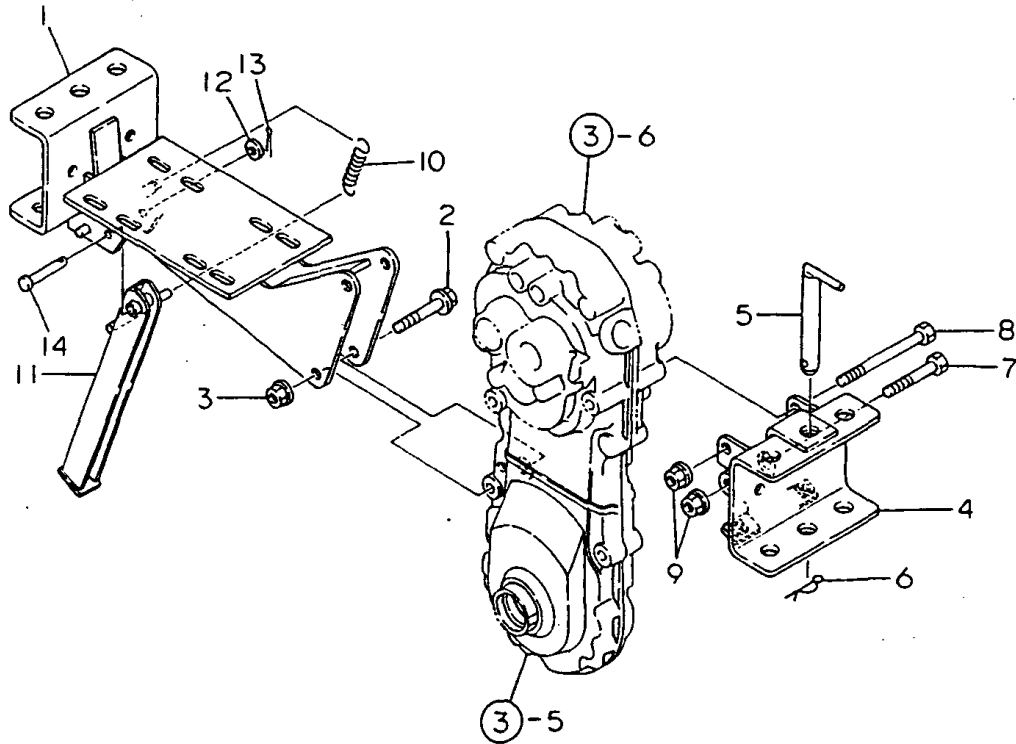


No.	Lev.	Parts No.	Description	Qty						I	R
				(A)	(B)	(C)	(D)	(E)	(F)		
1	1	1A2009-55101	GRIP,CONT.LEVER BLK.	1							
2	1	1A2009-55200	ARM COMP.,SWITCHING	1							
3	1	1A2009-55240	SPRING 8X60,TENSION	1							
4	1	1A2139-55300	FULCRUM A 422	1							
5	1	1A2139-55310	FULCRUM B 422	1							
6	1	1A2009-55350	COVER,SUB-CHANGE	1							
7	1	1A2009-55400	LEVER COMP.,DEADMAN	1							
8	1	1A2139-55751	WIRE ASSY,MN.CLUTCH	1							
8-1	1	1A2139-55770	WIRE CMP,MAIN CLUTCH	1							S 1
(A=F000541)											
9	1	1E7250-63300	GRIP	1							
10	1	1A1750-90050	SCREW 5X10,TAPPING	1							
11	1	1A1750-90150	WASHER 5,PLAIN	1							
12	1	22137-060000	WASHER, 6	1							
13	1	22137-080000	WASHER, 8	2							
14	1	22157-060000	WASHER, 6	1							
15	1	22360-060000	PIN, SNAP 6	1							
16	1	22417-200100	COTTER PIN 2.0X10	1							
17	1	22486-080400	PIN, H 8X 40	1							
18	1	26107-060122	BOLT M 6X 12 PLATED	2							
19	1	26107-080162	BOLT M 8X 16 PLATED	1							
20	1	26367-060002	NUT, M6	1							

Remarks
 (1)PART NUMBER IS INDICATED IN THE
 "A" AREA.

Fig.13. ENGINE FRAME & HITCH

13. ENGINE FRAME & HITCH



N073026

(A)=YK462

(B)=

(C)=

(D)=

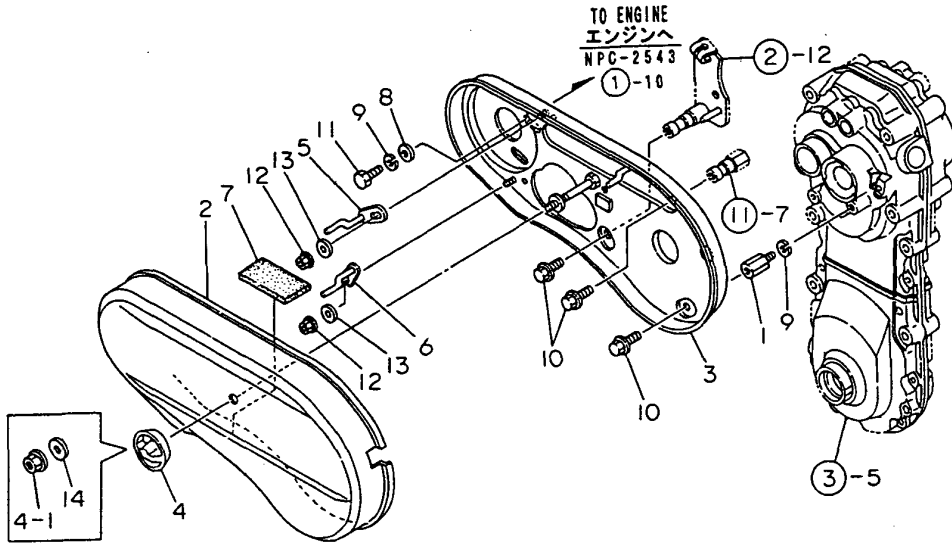
(E)=

(F)=

No.	Lev.	Parts No.	Description	Q'ty						I	R
				(A)	(B)	(C)	(D)	(E)	(F)		
1	1	1A2139-61000	FRAME 422 CMP.ENGINE	1							
2	1	26137-100502	BOLT, M10X 50 PLATED	2							
3	1	26377-100002	NUT, M10	2							
4	1	1A2138-61200	HITCH 95-B COMPL.	1							
5	1	1A1040-81100	PIN, HITCH	1							
6	1	22360-160000	PIN, SNAP 16	1							
6-1	1	1A2860-61450	SNAP PIN 16	1							N
		(A=FXXXXX)									
7	1	26156-100552	BOLT, M10X 55 PLATED	1							
8	1	26156-100952	BOLT, M10X 95 PLATED	1							
9	1	26367-100002	NUT, M10	2							
10	1	1A1105-16001	SPRING,MN.CLTCH LVR.	1							
11	1	1A2000-61300	STAND COMPL.	1							
12	1	22137-080000	WASHER, 8	1							
13	1	22417-200180	COTTER PIN 2.0X18	1							
14	1	22486-080400	PIN, H 8X 40	1							

Fig.14. BELT COVER

14. BELT COVER



N073027

(A)=YK462

(B)=

(C)=

(D)=

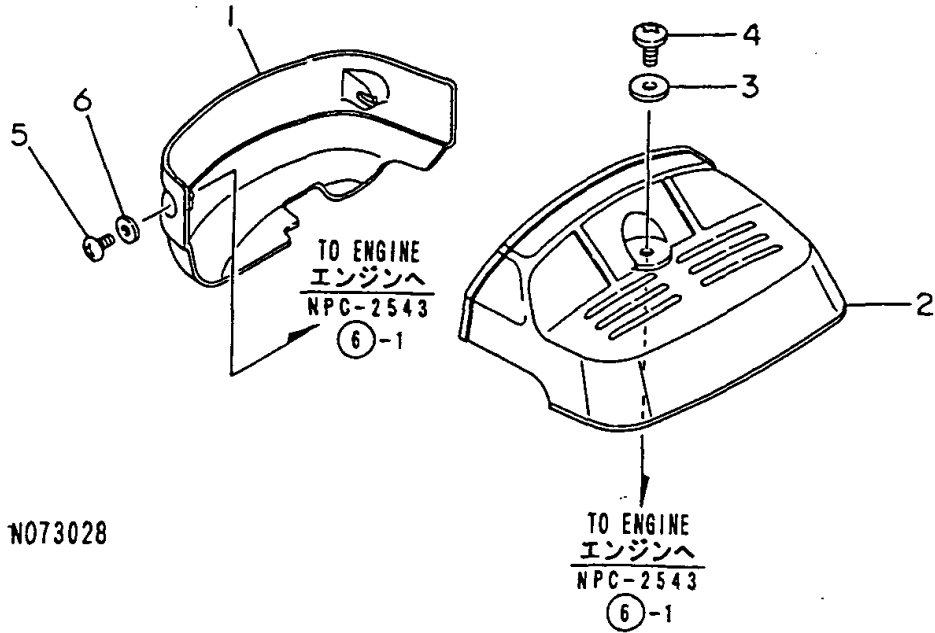
(E)=

(F)=

No.	Lev.	Parts No.	Description	Qty						I	R
				(A)	(B)	(C)	(D)	(E)	(F)		
1	1	1A1490-10340	STUD 22.5,BACK COVER	1							
2	1	1A2139-62010	COVER CHANGE	1							
3	1	1A2139-62200	COVER 422 COMP.,REAR	1							
4	1	1A2000-62300	KNOB,BELT COVER	1							
4-1	1	26367-080002	NUT, M8	1							S
(A=F000781)											
5	1	1A2000-62400	RETAINER COMP.,BELT	1							
6	1	1A2139-62400	RETAINER CMP,BELT LW	1							
7	1	1A2139-62480	SEAT 100X40X5	1							
8	1	22137-080000	WASHER, 8	2							
9	1	22217-080000	WASHER, SPRING 8	3							
10	1	26106-080122	BOLT, M8X 12 PLATED	3							
11	1	26117-080162	BOLT M 8X 16 PLATED	2							
12	1	26367-060002	NUT, M6	2							
13	1	22137-060000	WASHER, 6	2							W
(A=F000371)											
14	1	22157-080000	WASHER, 8	1							W
(A=F000781)											

Fig.15. BONNET

15. BONNET



N073028

(A)=YK462

(B)=

(C)=

(D)=

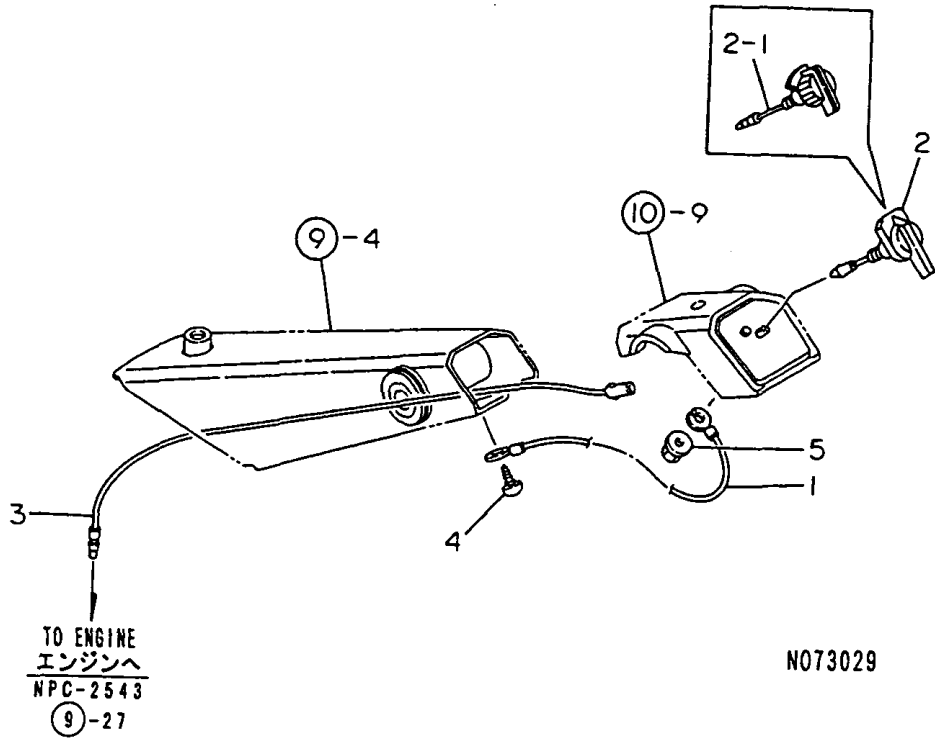
(E)=

(F)=

No.	Lev.	Parts No.	Description	Q'ty						I	R
				(A)	(B)	(C)	(D)	(E)	(F)		
1	1	1A2000-64100	MASK, FRONT	1							
2	1	1A2150-64200	COVER, REAR (40	1							
2-1	1	1A2150-64201	COVER,REAR(40W	1							N
			(A=F000681)								
3	1	1A2000-64210	WASHER 6X19X1.0	1							
4	1	1A2000-64220	SCREW 6X16	1							
5	1	1A1750-90050	SCREW 5X10,TAPPING	2							
6	1	1A1750-90150	WASHER 5,PLAIN	2							

Fig.16. ELECTRICAL PARTS

16. ELECTRICAL PARTS



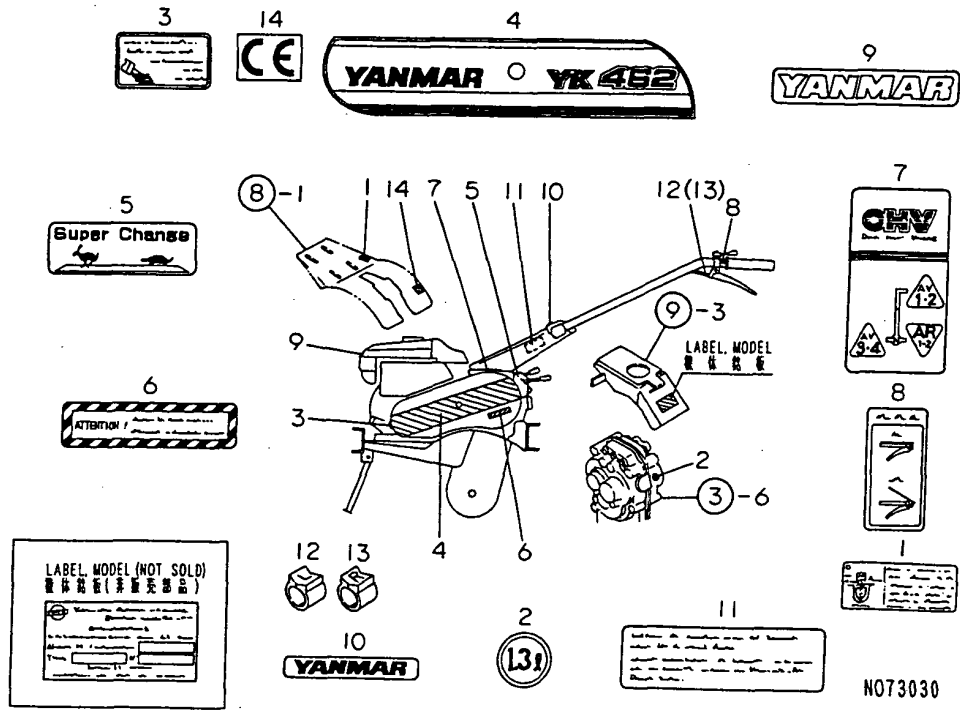
(A)=YK462
(B)=
(C)=

(D)=
(E)=
(F)=

No.	Lev.	Parts No.	Description	Q'ty						I	R
				(A)	(B)	(C)	(D)	(E)	(F)		
1	1	1A1750-40850	CORD,EARTH	1							
2	1	1A1470-40900	SWITCH,STOP	1							
2-1	1	1A1750-40800	SWITCH,STOP	1							S
(A=F000201)											
3	1	1A2000-83100	CORD,STOP SWITCH	1							
4	1	1A1750-90050	SCREW 5X10,TAPPING	1							
4-1	1	1A1750-90060	SCREW 5X16,TAPPING	1							R
(A=F000591)											
5	1	26367-080002	NUT, M8	1							

Fig.17. LABELS

17. LABELS



(A)=YK462

(B)=

(C)=

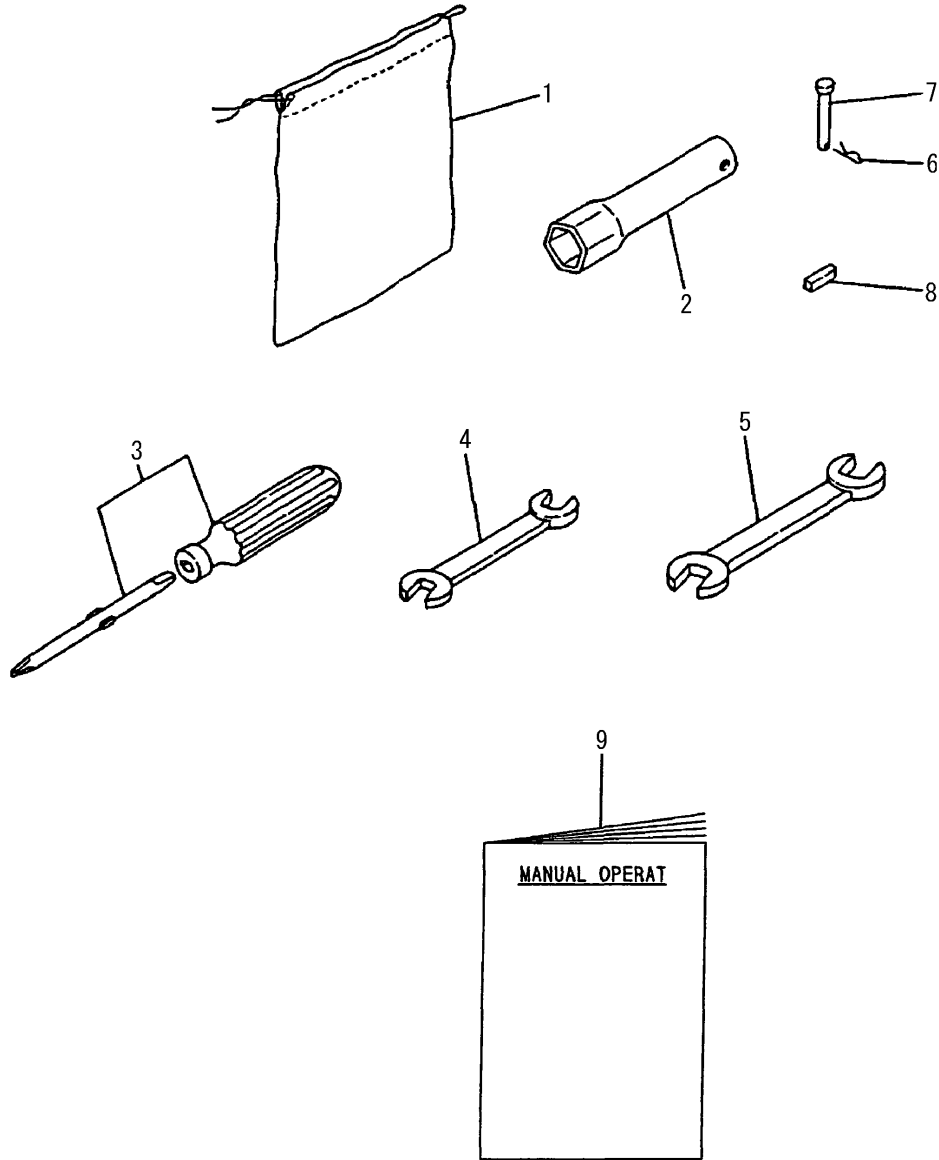
(D)=

(E)=

(F)=

No.	Lev.	Parts No.	Description	Q'ty						I	R
				(A)	(B)	(C)	(D)	(E)	(F)		
1	1	160602-07800	LABEL,FUEL COCK	1							
1-1	1	1A2099-86360	LABEL,FUEL COCK	1							R
(A=F000201)											
2	1	1D1360-17040	MARK,OIL	1							
3	1	1A1750-83350	LABEL,ENGINE OIL	1							
3-1	1	1A2099-86820	LABEL,ENG.OIL,ITA	1							R
(A=F000201)											
4	1	1A2139-86150	LABEL 462,BELT COVER	1							
5	1	1A2009-86200	LABEL,SUB-CHANGE	1							
6	1	1A2099-86200	LABEL,BELT CVR.SAFTY	1							
6-1	1	1A2099-86300	LABEL,CVR.SAFTY	1							R
(A=F000201)											
7	1	1A2138-86200	LABEL 382,CHANGE	1							
8	1	1A2009-86210	LABEL,MAIN CLUTCH	1							
8-1	1	1A2009-86340	LABEL,MAIN CLUTCH	1							R
(A=F000201)											
9	1	1A2130-86320	LABEL,FUEL TANK	1							
10	1	1A2130-86500	LABEL,HANDLE COVER	1							
11	1	1A1107-88130	LABEL	1							
11-1	1	1A2099-86320	LABEL,CAUTION	1							R
(A=F000201)											
12	1	1A1103-88800	BAND L,MARK	1							
13	1	1A1103-88810	BAND R,MARK	1							
14	1	1A6150-92550	MARK CE	1							W
(A=F000621)											
14-1	1	1E1061-86610	MARK CE	1							N
(A=F000631)											
14-2	1	1E1061-86610	MARK CE	1							Z
(A=F000831)											

Fig.18. TOOLS & ACCESSORIES



No.	Lev.	Parts No.	Description	Q'ty						I	R
				(A)	(B)	(C)	(D)	(E)	(F)		
1	1	1A1750-83900	TOOL BAG	1							
2	1	160110-92700	WRENCH, 21 L140	1							
3	1	160330-92730	DRIVE, SCREW	1							
3-1	1	1D2040-87060 (A=F000391)	SCREWDRIVER, COMBINAT	1							R
4	1	28110-100120	SPANNER, 10X12	1							
5	1	28110-120140	SPANNER, 12X14	1							
6	1	22372-060000	PIN, SNAP 6	2							
7	1	22487-060400	PIN 6X 40	2							
8	1	22550-050201	KEY, 5X 20	1							
9	1	1A2009-88002 (A=FZZZZZ)	MANUAL	1							W

Parts No. Index

Parts No.	Fig. No.	Ref. No.
160110-92700	18	2
160330-92730	18	3
160602-07800	17	1
192040-56220	10	4
1A1040-81100	13	5
1A1102-57350	11	3
1A1102-57360	11	14
1A1102-57390	11	4
1A1103-88800	17	12
1A1103-88810	17	13
1A1104-28230	6	4
1A1105-16001	13	10
1A1105-23210	2	4
1A1107-88130	17	11
1A1220-28290	3	10
1A1470-20090	3	1
1A1470-20700	7	1
1A1470-40301	11	1
1A1470-40350	9	2
1A1470-40900	16	2
1A1490-10340	14	1
1A1750-20410	3	2
1A1750-20421	3	3
1A1750-20431	3	4
1A1750-40800	16	2 -1
1A1750-40850	16	1
1A1750-83350	17	3
1A1750-83900	18	1
1A1750-90050	10	10
	12	10
	15	5
	16	4
1A1750-90060	10	10 -1
	16	4 -1
1A1750-90150	10	11
	12	11
	15	6
1A1750-90200	6	6
1A1950-21100	3	5
1A1950-21200	3	9
1A1950-27100	6	3
1A1950-27101	6	3 -1
1A1950-27750	7	6
1A1950-27800	7	7
1A2000-13190	2	11
1A2000-24520	5	7
1A2000-24530	5	8
1A2000-24550	5	9
1A2000-24600	5	10
1A2000-27530	7	2

Parts No.	Fig. No.	Ref. No.
1A2000-27600	7	3
1A2000-27650	7	4
1A2000-51400	10	1
1A2000-51430	10	2
1A2000-55830	11	17
1A2000-61300	13	11
1A2000-62300	14	4
1A2000-62400	14	5
1A2000-64100	15	1
1A2000-64210	15	3
1A2000-64220	15	4
1A2000-83100	16	3
1A2001-13050	2	10 -1
1A2001-13051	2	10 -2
1A2001-13100	2	14 -1
1A2001-21250	3	14 -1
1A2009-13300	2	1
1A2009-13301	2	1 -1
1A2009-13341	2	3
1A2009-13342	2	3 -1
1A2009-13540	2	14
1A2009-24501	5	5
1A2009-24511	5	6
1A2009-55101	12	1
1A2009-55200	12	2
1A2009-55240	12	3
1A2009-55350	12	6
1A2009-55400	12	7
1A2009-86200	17	5
1A2009-86210	17	8
1A2009-86340	17	8 -1
1A2009-88002	18	9
1A2099-86200	17	6
1A2099-86300	17	6 -1
1A2099-86320	17	11 -1
1A2099-86360	17	1 -1
1A2099-86820	17	3 -1
1A2130-13200	2	12
1A2130-21110	3	6
1A2130-21150	3	7
1A2130-21160	3	8
1A2130-23020	4	2
1A2130-23030	4	3
1A2130-23110	4	7
1A2130-23200	4	8
1A2130-23210	4	9
1A2130-23220	4	10
1A2130-23830	5	2
1A2130-23900	5	3
1A2130-27000	6	1

Parts No.	Fig. No.	Ref. No.
1A2130-27050	6	2
1A2130-27100	6	3 -2
1A2130-27700	7	5
1A2130-32000	8	1
1A2130-51050	9	3
1A2130-51100	9	4
1A2130-51200	9	5
1A2130-51210	9	6
1A2130-51220	9	7
1A2130-51400	10	9
1A2130-55050	11	7
1A2130-55150	11	9
1A2130-55520	11	13
1A2130-55800	11	16
1A2130-55850	11	18
1A2130-55900	11	19
1A2130-55950	11	20
1A2130-86320	17	9
1A2130-86500	17	10
1A2138-23500	5	1
1A2138-32090	8	3
1A2138-32150	8	4
1A2138-61200	13	4
1A2138-86200	17	7
1A2139-12000	1	7
1A2139-13310	2	2
1A2139-13311	2	2 -1
1A2139-13510	2	13
1A2139-23010	4	1
1A2139-51500	10	3
1A2139-51550	10	3 -1
1A2139-55100	11	8
1A2139-55200	11	10
1A2139-55300	12	4
1A2139-55310	12	5
1A2139-55500	11	11
1A2139-55510	11	12
1A2139-55520	11	11 -1
1A2139-55530	11	13 -1
1A2139-55751	12	8
1A2139-55770	12	8 -1
1A2139-55800	11	16 -1
1A2139-55850	11	18 -1
1A2139-61000	13	1
1A2139-62010	14	2
1A2139-62200	14	3
1A2139-62400	14	6
1A2139-62480	14	7
1A2139-86150	17	4
1A2150-64200	15	2

Parts No.	Fig. No.	Ref. No.
1A2150-64201	15	2 -1
1A2860-61450	13	6 -1
1A6150-92550	17	14
1D1140-11420	1	6
1D1360-17040	17	2
1D2040-15480	9	1
1D2040-87060	18	3 -1
1E1061-86610	17	14 -1
		14 -2
1E4060-10040	2	10
1E4060-74090	4	4
1E6102-84970	10	6
1E6150-56040	6	5
1E6570-65750	10	5
	11	21
1E7250-63300	12	9
22137-060000	11	22
	12	12
	14	13
22137-080000	1	1
	12	13
	13	12
	14	8
22137-100000	9	8
22137-120000	10	7
22157-060000	12	14
22157-080000	14	14
22217-080000	1	2
	14	9
22217-120000	10	8
22242-000120	11	23
22242-000150	2	5
		15
22242-000170	2	6
	4	11
		14
22252-000350	2	7
22272-000060	2	16
22351-040016	9	9
22360-060000	12	15
22360-160000	13	6
22372-060000	18	6
22417-160120	7	8
22417-200100	11	24
	12	16
22417-200120	7	9
22417-200180	13	13
22486-080400	12	17
	13	14
22487-060120	7	10

Parts No. Index

Parts No.	Fig. No.	Ref. No.
22487-060400	18	7
22512-050300	1	8
22550-050201	18	8
22867-600160	3	11
23414-080000	3	12
24101-062024	4	12
	5	4
24101-062034	4	5
		13
24101-062054	5	11
24104-060034	2	8
24104-062024	2	9
24190-100001	6	7
24190-120001	5	12
	9	10
24311-000050	9	11
24311-000100	7	11
24421-173007	4	6
25123-003501	1	9
26013-080162	1	10 -1
26013-080164	1	10
26106-060252	3	13
26106-080122	8	5
	14	10
26107-060122	12	18
26107-080122	8	2
26107-080162	12	19
26117-080122	3	14
26117-080162	14	11
26117-080402	1	3
26117-080452	1	4
26137-100502	3	15
	13	2
26156-100552	13	7
26156-100952	13	8
26157-101002	2	17
	9	12
26367-060002	3	16
	12	20
	14	12
26367-080002	7	12
	8	6
	14	4 -1
	16	5
26367-100002	13	9
26377-100002	2	18
	3	17
	9	13
	13	3
26450-080202	9	14

Parts No.	Fig. No.	Ref. No.
26476-060142	7	13
	11	25
26557-060222	11	5
		15
26717-060002	11	6
26717-080002	1	5
28110-100120	18	4
28110-120140	18	5
7A1102-50720	11	2

Parts No.	Fig. No.	Ref. No.
-----------	----------	----------

Parts No.	Fig. No.	Ref. No.
-----------	----------	----------